

THE DIARY OF JANE

BREAKING BENJAMIN

♩ = 83 INTRO

The Intro section consists of four staves of drum notation in 4/4 time. The first staff begins with a 4/4 time signature and a double bar line. The notation includes various rhythmic patterns such as eighth and sixteenth notes, rests, and accents. A repeat sign is placed at the end of the fourth staff.

VERSE

The Verse section consists of two staves of drum notation. The notation features a mix of eighth and sixteenth notes with accents, creating a steady rhythmic flow.

CHORUS

The Chorus section consists of two staves of drum notation. It features a prominent eighth-note pattern with accents, characteristic of the song's chorus. A repeat sign is placed at the end of the second staff.



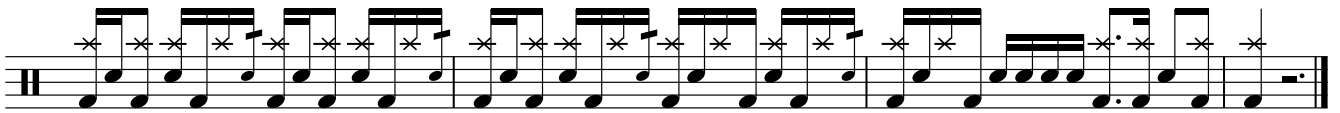
D.S. al Coda

BREAK

BRIDGE

CHORUS

OUTRO



Fine