

BUBBLES

BIFFY CLYRO

♩ = 147 INTRO Gtr.

Intro guitar notation in 4/4 time. It begins with two measures of whole rests. The third measure starts with a treble clef, a key signature of one sharp (F#), and a common time signature. The melody consists of eighth notes with 'x' marks above them, indicating muted notes. The notes are: G4, A4, B4, C5, B4, A4, G4, F#4, G4, A4, B4, C5, B4, A4, G4, F#4, G4, A4, B4, C5.

VERSE

Verse guitar notation line 1. It starts with a treble clef and a common time signature. The melody consists of eighth notes with 'x' marks above them. The notes are: G4, A4, B4, C5, B4, A4, G4, F#4, G4, A4, B4, C5, B4, A4, G4, F#4, G4, A4, B4, C5. A repeat sign with first and second endings follows.

Verse guitar notation line 2. It continues the melody from the previous line. The notes are: G4, A4, B4, C5, B4, A4, G4, F#4, G4, A4, B4, C5, B4, A4, G4, F#4, G4, A4, B4, C5. The line ends with a double bar line, a '4' above it, and a slash with three diagonal lines, indicating a four-measure rest.

Verse guitar notation line 3. It starts with a four-measure rest (indicated by '4' above and a slash with three diagonal lines). The melody then continues with eighth notes with 'x' marks above them. The notes are: G4, A4, B4, C5, B4, A4, G4, F#4, G4, A4, B4, C5, B4, A4, G4, F#4, G4, A4, B4, C5.

Verse guitar notation line 4. It shows two first endings. The first ending consists of eighth notes with 'x' marks above them: G4, A4, B4, C5, B4, A4, G4, F#4, G4, A4, B4, C5, B4, A4, G4, F#4, G4, A4, B4, C5. The second ending consists of eighth notes with 'x' marks above them: G4, A4, B4, C5, B4, A4, G4, F#4, G4, A4, B4, C5, B4, A4, G4, F#4, G4, A4, B4, C5.

CHORUS

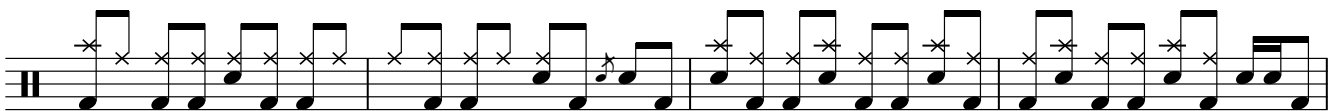
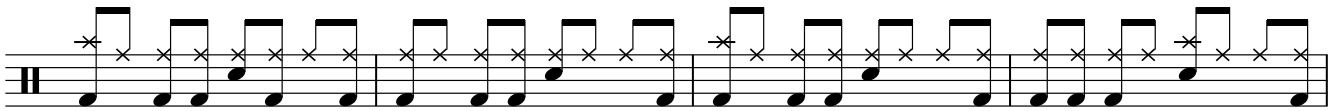
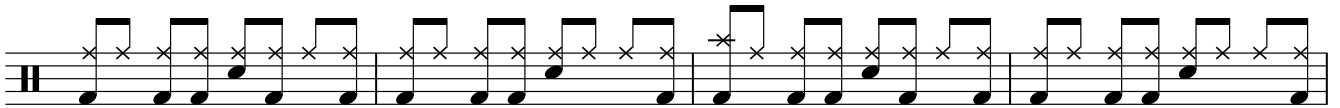
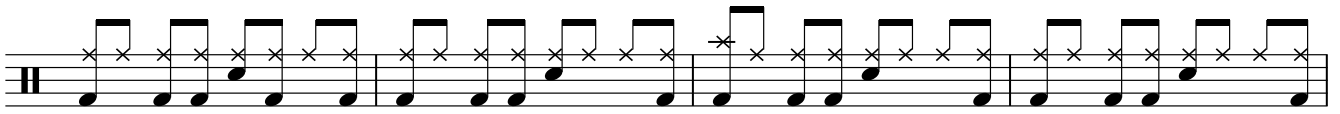
Chorus guitar notation line 1. It starts with a treble clef and a common time signature. The melody consists of eighth notes with 'x' marks above them. The notes are: G4, A4, B4, C5, B4, A4, G4, F#4, G4, A4, B4, C5, B4, A4, G4, F#4, G4, A4, B4, C5.

Chorus guitar notation line 2. It starts with a two-measure rest (indicated by '2' above and a slash with three diagonal lines). The melody then continues with eighth notes with 'x' marks above them. The notes are: G4, A4, B4, C5, B4, A4, G4, F#4, G4, A4, B4, C5, B4, A4, G4, F#4, G4, A4, B4, C5. A first ending bracket covers the final two notes, G4 and F#4.

BRIDGE

Bridge guitar notation line 1. It starts with a second ending bracket from the previous line. The melody then continues with eighth notes with 'x' marks above them. The notes are: G4, A4, B4, C5, B4, A4, G4, F#4, G4, A4, B4, C5, B4, A4, G4, F#4, G4, A4, B4, C5.

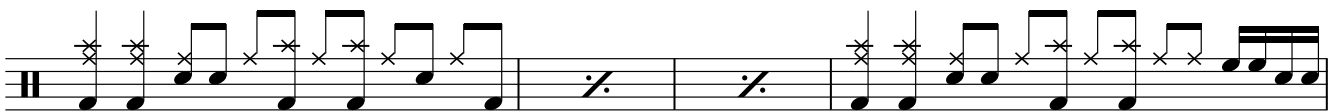
2 BUBBLES



D.S. al Fine (verse no repeat)



OUTRO



Fine