

LOVE IS STRONGER THAN JUSTICE

STING

♩ = 166 INTRO

Gtr. / /

VERSE

2 LOVE IS STRONGER

CHORUS

Musical notation for the start of the Chorus section. It begins with a double bar line and a 4/4 time signature. The first four measures contain eighth notes with 'x' marks above them. The fifth measure is a triplet of eighth notes, followed by two more triplet measures, and the section ends with a final triplet measure.

A single musical staff with six measures. Each measure contains a double bar line followed by a slash and a vertical line, indicating a repeat or cut-off.

BRIDGE

Musical notation for the Bridge section. It starts with a 7/8 time signature. The first four measures are eighth notes with 'x' marks and triplet markings. The fifth measure has a circled note. The section ends with a double bar line.

Musical notation for the first line of the Verse section. It consists of eight measures of eighth notes with 'x' marks above them.

D.S. al Coda

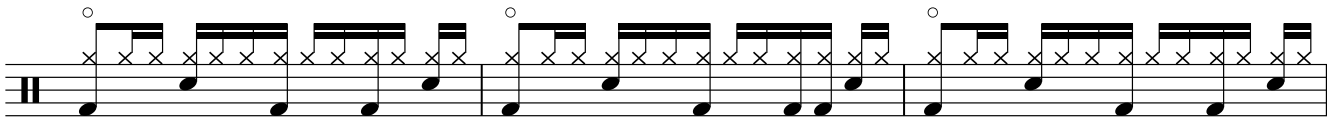
Musical notation for the second line of the Verse section. It consists of eight measures of eighth notes with 'x' marks above them.

Musical notation for the third line of the Verse section. It consists of eight measures of eighth notes with 'x' marks above them.

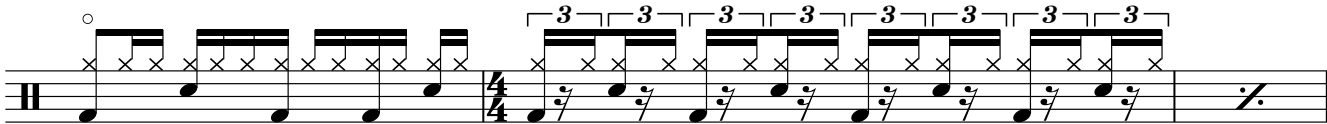
VERSE

Musical notation for the first line of the Verse section. It consists of eight measures of eighth notes with 'x' marks above them.

Musical notation for the second line of the Verse section. It consists of eight measures of eighth notes with 'x' marks above them.



CHORUS



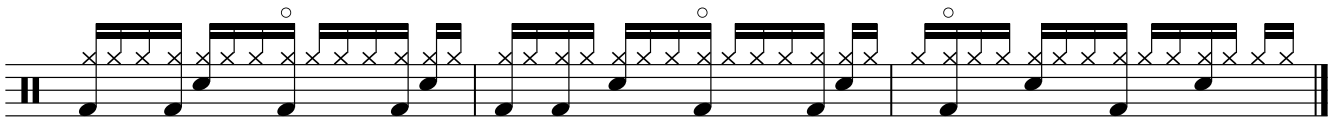
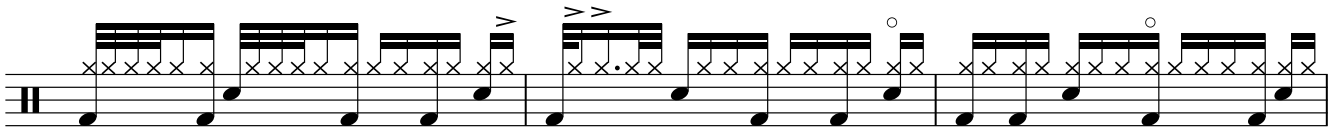
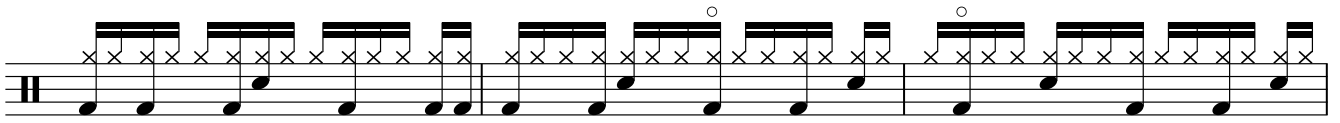
BRIDGE



OUTRO



4 LOVE IS STRONGER



Repeat to fade