

A-PUNK

VAMPIRE WEEKEND

♩ = 175 INTRO

The Intro section consists of two staves of music in 4/4 time. The first staff shows a series of chords: a whole rest, another whole rest, followed by four measures of a power chord (G2, B2, D3). The second staff shows a rhythmic pattern of eighth notes with 'x' marks above them, indicating muted notes, followed by three measures of a double bar line with a slash, indicating a section cut.

VERSE

The Verse section consists of two staves of music in 4/4 time. The first staff begins with a section cut, followed by a melodic line with eighth notes and 'x' marks above them, and a bass line with eighth notes. The second staff continues the melodic line with eighth notes and 'x' marks, followed by four measures of a double bar line with a slash, indicating a section cut.

BRIDGE

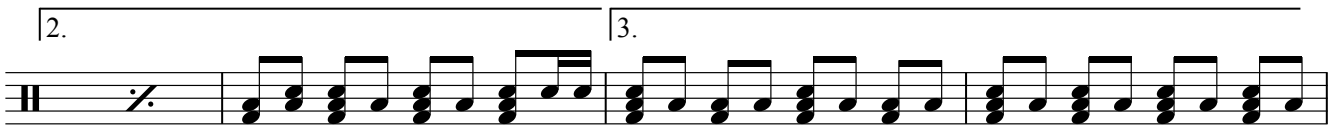
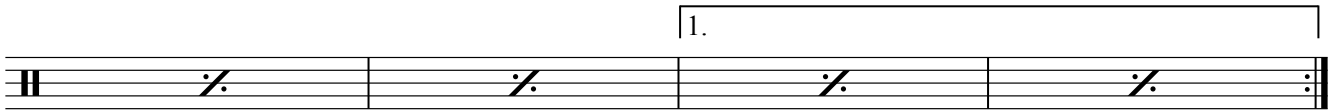
The Bridge section consists of two staves of music in 4/4 time. The first staff begins with a double bar line with repeat dots, followed by a melodic line with eighth notes and a bass line with eighth notes. The second staff continues the melodic line with eighth notes and a bass line with eighth notes, followed by two measures of a double bar line with a slash, indicating a section cut.

CHORUS

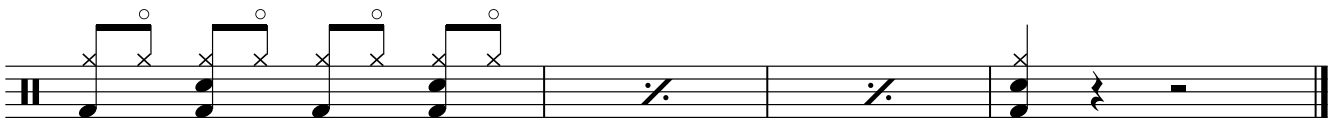
The Chorus section consists of two staves of music in 4/4 time. The first staff shows a rhythmic pattern of eighth notes with 'x' marks above them, followed by two measures of a double bar line with a slash, indicating a section cut. The second staff continues the rhythmic pattern with eighth notes and 'x' marks, followed by a melodic line with eighth notes and a bass line with eighth notes.

D.S. al Coda

BRIDGE



CHORUS



Fine