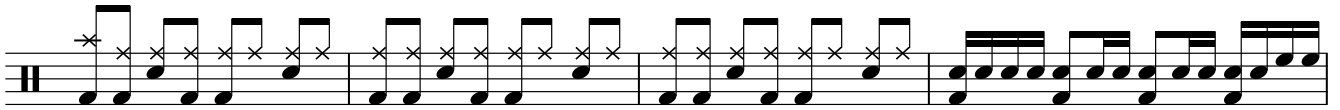
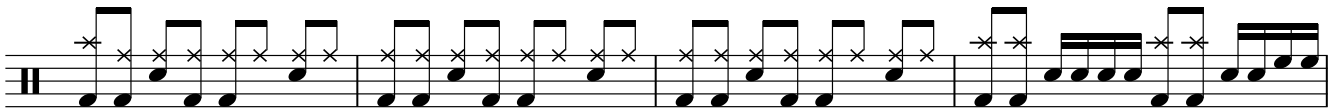
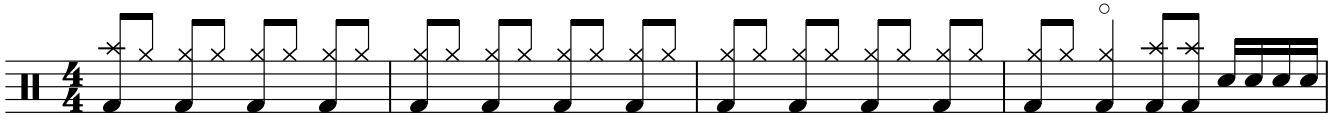


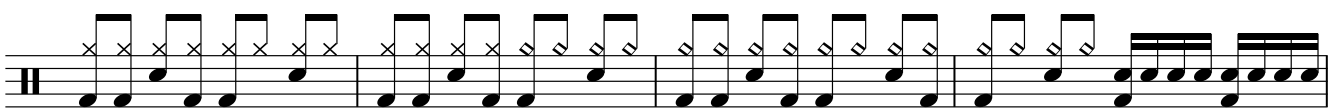
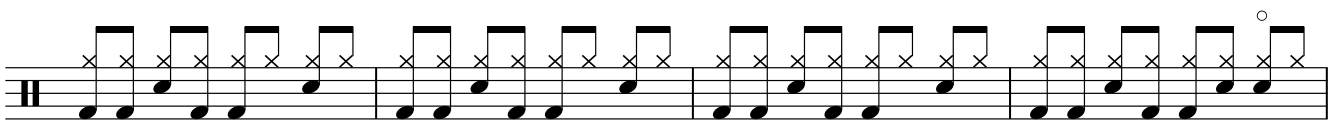
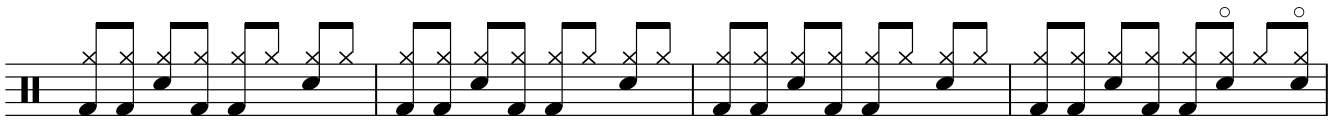
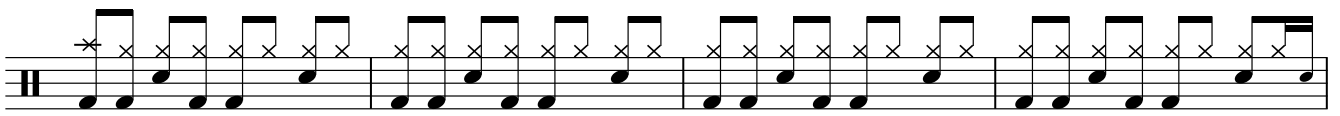
# THE HELL SONG

SUM 41

♩ = 174 INTRO



**VERSE**



**BRIDGE**



Musical notation for the first section of 'The Hell Song'. It consists of a single staff with a treble clef and a double bar line. The notation includes eighth and sixteenth notes, with 'x' marks above some notes indicating specific guitar techniques. The section concludes with the instruction 'D.S. al Coda'.

**CHORUS**

Musical notation for the start of the Chorus section. It begins with a Coda symbol (a circle with a cross) and a double bar line. The notation features eighth and sixteenth notes with 'x' marks above them.

Musical notation for the second line of the Chorus, continuing the rhythmic pattern of eighth and sixteenth notes with 'x' marks.

Musical notation for the third line of the Chorus, continuing the rhythmic pattern of eighth and sixteenth notes with 'x' marks.

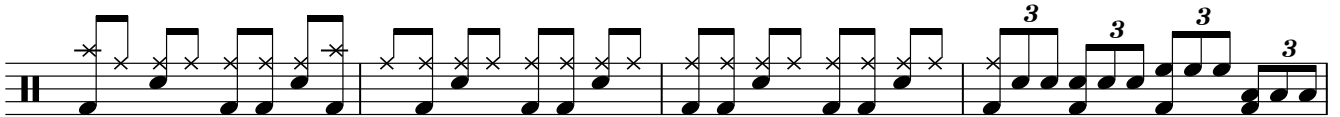
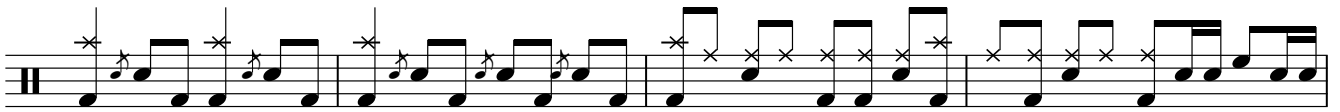
Musical notation for the fourth line of the Chorus, continuing the rhythmic pattern of eighth and sixteenth notes with 'x' marks.

Musical notation for the fifth line of the Chorus, continuing the rhythmic pattern of eighth and sixteenth notes with 'x' marks.

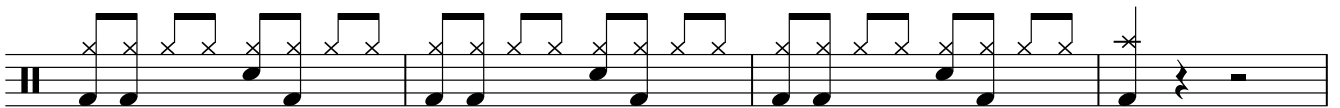
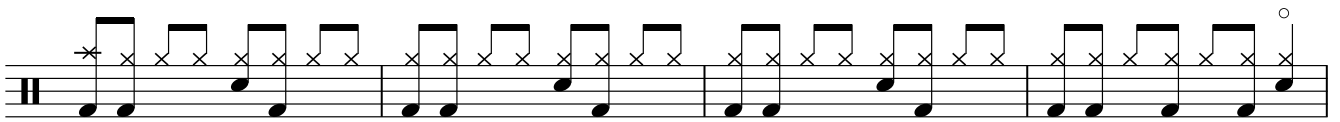
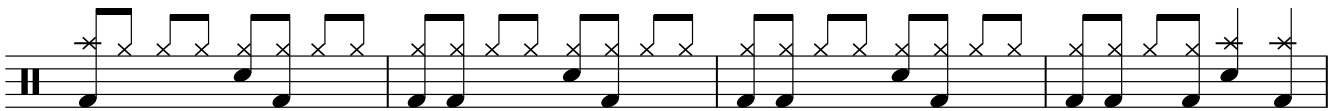
**GUITAR SOLO**

Musical notation for the first line of the Guitar Solo, featuring eighth and sixteenth notes with 'x' marks.

Musical notation for the second line of the Guitar Solo, continuing the rhythmic pattern of eighth and sixteenth notes with 'x' marks.



**BREAKDOWN**



**CHORUS**



