

CRUSHCRUSHCRUSH

PARAMORE

♩ = 137

VERSE

PRE CHORUS

CHORUS

2 CRUSHCRUSHCRUSH

VERSE

The Verse section consists of two staves of music. The first staff contains two measures of music with eighth notes and quarter notes, some marked with 'x' and 'o'. The second staff contains two measures of music, starting with a repeat sign (double bar line with dots) and ending with another repeat sign. The notes are primarily eighth and quarter notes.

PRE CHORUS

The Pre Chorus section consists of four staves of music. The first staff starts with a repeat sign and contains two measures of music. The second staff contains two measures of music. The third staff contains two measures of music, ending with a repeat sign. The fourth staff contains two measures of music, including a triplet of eighth notes. The notation includes various rhythmic values and accidentals.

CHORUS

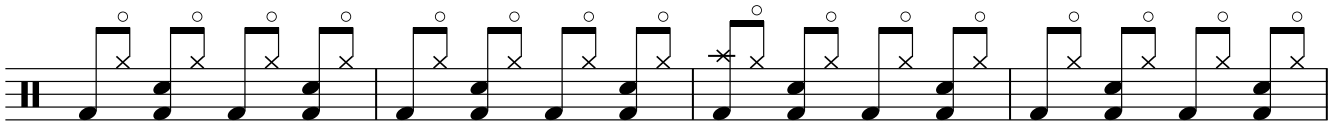
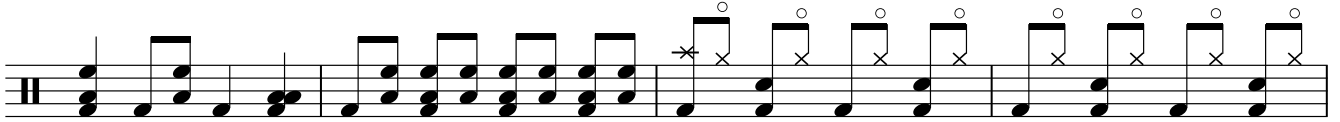
The Chorus section consists of two staves of music. The first staff contains two measures of music, starting with a repeat sign. The second staff contains two measures of music, including a triplet of eighth notes. The notation includes various rhythmic values and accidentals.

BREAK

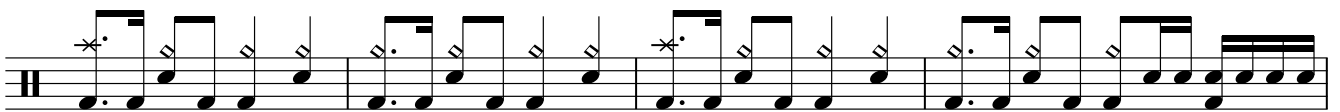
The Break section consists of one staff of music containing two measures of music. The notation includes various rhythmic values and accidentals.



BRIDGE



CHORUS



OUTRO



Fine